

The EL910 Particulate Filter Holder is a mechanical device used to hold a filter media in a sample air stream for the purpose of collecting particulate which may be radioactive. The filter media is positioned so that a detector may be installed to provide continuous radiation measurements of the filter. The filter is readily accessible via a cam lock, o-ring sealed, slide. The EL910 is a 2-in. diameter filter paper holder capable of withstanding up to 10 CFM flow rate through the filter medium.

Common detectors that are used in conjunction with the EL910 include GM tubes, NaI, and charged-particle detectors. The ORTEC Model 905-1 NaI fits into the holder. ORTEC ULTRA™ detectors, up to 1700 mm<sup>2</sup> in diameter, can be fitted to the EL910. Complete monitoring systems based on the EL910 — including detector, electronics, and software — can be ordered from ORTEC.

If the detector is not used, the EL910 functions as a simple sampler.



### Ordering Information

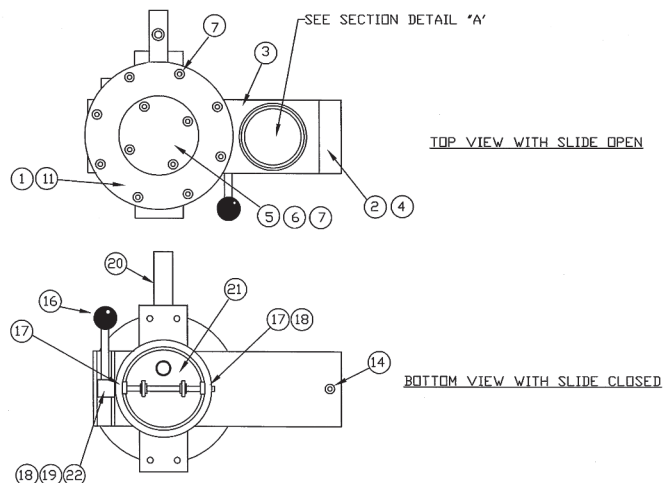
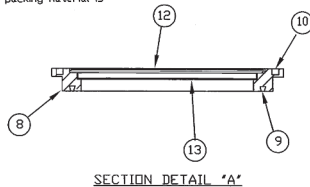
To order, specify:

Model	Description
EL910	Particulate Filter Holder

NO.	QTY.	DESCRIPTION
1	1	DWGM 910-MD-20-05-RX
2	1	DWGM 910-MD-20-AA-RX
3	1	DWGM 910-MD-20-02-RX
4	2	#6-32 SOCKET HEAD CAP SCREW X 1.25" LG., S.S.
5	1	DWGM 910-MD-20-13-RX
6	1	O-RING, 2-035
7	12	#6-32 SOCKET HEAD CAP SCREW X 0.50" LG., S.S.
8	1	DWGM 910-MD-20-01-RX
9	1	O-RING, 2-149
10	1	O-RING, 2-152
11	1	O-RING, 2-039
12	1	SAMPLE PAPER, CUSTOMER SUPPLIED
13	1	FRIT, 100 MICRON #2.775" X 0.093 THK.
14	1	#10-32 SOCKET HEAD CAP SCREW X 0.375 LG.
15	1	(N/A)
16	1	PHENOLIC BALL KNOB
17	2	BOSTON BEARING FB46-3 OR EQUIVALENT
18	1	TRUARC S100-25 OR EQUIVALENT SNAP RING, S.S.
19	3	ROLL PIN #3/32" X 1/2" LG., S.S.
20	1	DWGM 910-MD-20-09-RX
21	1	DWGM 910-MD-20-10-RX
22	1	DWGM 910-MD-20-08-RX

#### Finish and packing instructions:

1. Finished parts must be degreased and dried before assembly
2. Each unit should be sealed in a clear plastic bag
3. Each unit should be individually boxed
4. Styrofoam pellets ("peanuts" or "popcorn") packing material is not to be used within the individual box.



Specifications subject to change  
073117